



Southern Midlands Council

2018 election report

Contents

- Local Government Elections in Tasmania
- Report on the 2018 Southern Midlands Council Elections
- List of Councillors following the 2018 elections
- Councillor results
- Mayor and Deputy Mayor results
- Recount results

Local Government Elections in Tasmania

The 2018 Southern Midlands Council election was conducted by the Tasmanian Electoral Commission in accordance with the *Local Government Act 1993*.

Candidate information booklets and complete election results for the state are published on the TEC website www.tec.tas.gov.au.

2018 Election timetable

Notice of election published	Saturday 8 September
Nominations opened	9am Monday 10 September
Electoral rolls closed	6pm Thursday 13 September
Nominations closed	12 noon Monday 24 September
Nominations announced	12 noon Tuesday 25 September
Ballot material received by electors	8–12 October
Polling period	8–30 October
Close of poll	10am Tuesday 30 October

Councillor casual vacancies

Councillor casual vacancies are filled by recount. Only unelected candidates from the relevant election may contest a recount. If there are no unelected candidates able to contest the recount, or the casual vacancy is also for the mayoral position, a by-election is held. A candidate elected at a recount or by-election serves until the next council election.

No casual vacancies are filled within 6 months of the next ordinary election, unless the vacancy results in the council unable to have a quorum.

Elector polls

A council may hold an elector poll on any issue it determines. A council may also be required to hold an elector poll following petitions from electors in accordance with Part 6 of the Act. A council is not bound by the result of an elector poll.

Electoral system

Elections for councillor positions are conducted using a system modelled on the Hare-Clark method of proportional representation used in Tasmanian House of Assembly elections.

Mayoral and deputy mayoral elections use a preferential system similar to that used for Tasmanian Legislative Council and federal House of Representatives elections.

Voting in Tasmanian local government elections is not compulsory.

Andrew Hawkey ELECTORAL COMMISSIONER July 2019

Report on the 2018 Southern Midlands Council Elections

Elections were held for the positions of Mayor, Deputy Mayor and 7 Councillors, all for 4 year terms.

4 599 Southern Midlands electors were enrolled for the 2018 elections, comprising 4 553 (99.00%) from the State House of Assembly roll and 46 (1.00%) from the General Manager's roll.

66.08% of Southern Midlands electors returned their ballot papers in comparison with 58.72% statewide.

Southern Midlands Councillors

Councillors are listed in order of their election.

Prior to the 2018 elections

Mayor

BISDEE, Tony

Deputy Mayor

GREEN, Alex[^]

7 Councillors

BISDEE, Tony

BATT, Edwin

GREEN, Alex

BANTICK, AR (Tony)

FISH, Donald Frank

CAMPBELL, Bob

MARSHALL, David*

Following the 2018 elections

Mayor

GREEN, Alex

Deputy Mayor

Position not filled #

7 Councillors

DUDGEON, Karen

BISDEE, Tony

GREEN, Alex

McDOUGALL, Rowena

BATT, Edwin

BANTICK, Tony

FISH, Donald Frank

* elected by recount

[^] elected by councillors

David Laughler was elected as deputy mayor but was unable to accept the position as he was not elected as a councillor.

Recounts between the 2014 and 2018 elections

A recount was conducted on 13 February 2015, to fill a vacancy for councillor on the Southern Midlands Council following the death of Deputy Mayor and Councillor Mark Jones on 29 January 2015. Five unelected candidates from the 2014 Southern Midlands Council election contested the recount. An abstract of the count is at the back of this report.

The candidates

Southern Midlands Council

enrolment 4 599

Councillor	13 candidates (7 to be elected)	
BANTICK, Tony		Bagdad
BATT, Edwin		Melton Mowbray
BISDEE, Tony		Melton Mowbray
CAMPBELL, Bob		Andover
DUDGEON, Karen		Andover
FISH, Donald Frank		Andover
GREEN, Alex		Campania
HAY, John		Kempton
LAUGHER, David		Oatlands
McDOUGALL, Rowena		Baden
MUXLOW, Jenni		Oatlands
NICHOLS, Annette		Pontville
WILLIAMS, Craig		Tea Tree

Mayor	5 candidates	
BISDEE, Tony		Melton Mowbray
CAMPBELL, Bob		Andover
GREEN, Alex		Campania
HAY, John		Kempton
McDOUGALL, Rowena		Baden

Deputy Mayor	2 candidates	
BATT, Edwin		Melton Mowbray
LAUGHER, David		Oatlands

Southern Midlands Council - 2018 Councillor election

Polling closed at 10am 30 October 2018

Electors enrolled: 4 599

Declarations rejected: 44

Number to be elected: 7

Declarations returned: 3 039

Declarations admitted: 2 995

Returning Officer: Ms Justin Meeker

Response rate: 66.08%

Rejection rate: 1.45%

Count	BANTICK	BATT	BISDEE	CAMPBELL	DUDGEON	FISH	GREEN	HAY	LAUGHER	MCDUGALL
1	182.00	235.00	492.00	128.00	497.00	160.00	455.00	122.00	120.00	253.00
2	7.22	23.01		5.08	- 133.00	40.40		6.69	15.78	13.91
3	189.22	258.01	492.00	133.08	364.00	200.40	455.00	128.69	135.78	266.91
4	14.30	39.02	- 128.00	8.06		23.93		8.58	15.86	8.32
5 to 8	203.52	297.03	364.00	141.14	364.00	224.33	455.00	137.27	151.64	275.23
9 to 12	6.20	13.60		7.60		15.60	- 91.00	7.00	19.40	12.60
13 to 16	209.72	310.63	364.00	148.74	364.00	239.93	364.00	144.27	171.04	287.83
17	3.26	6.93		2.85		5.52		5.78	8.93	12.73
18	212.98	317.56	364.00	151.59	364.00	245.45	364.00	150.05	179.97	300.56
19 to 22	19.79	6.00		3.78		8.79		8.32	11.18	24.66
23	232.77	323.56	364.00	155.37	364.00	254.24	364.00	158.37	191.15	325.22
24	14.32	19.97		- 155.37		19.37		24.75	28.66	39.51
25 to 27	247.09	343.53	364.00	0.00	364.00	273.61	364.00	183.12	219.81	364.73
28	0.00	0.12				0.00		0.00	0.24	- 0.73
29	247.09	343.65	364.00		364.00	273.61	364.00	183.12	220.05	364.00
30	49.00	24.00				23.00		30.00	29.00	
31	296.09	367.65	364.00		364.00	296.61	364.00	213.12	249.05	364.00
32	5.88					5.43		7.14	5.64	
33	301.97	367.65	364.00		364.00	302.04	364.00	220.26	254.69	364.00
34	1.67	- 3.65				0.91		0.45	0.45	
35	303.64	364.00	364.00		364.00	302.95	364.00	220.71	255.14	364.00
36	66.00					47.00		- 184.00	68.00	
37	369.64	364.00	364.00		364.00	349.95	364.00	36.71	323.14	364.00
38						15.86		- 36.02	19.37	
39	369.64	364.00	364.00		364.00	365.81	364.00	0.69	342.51	364.00

Ballot paper adjustment: 14

Total ballot papers: 2 981

Formal Votes: 2 906

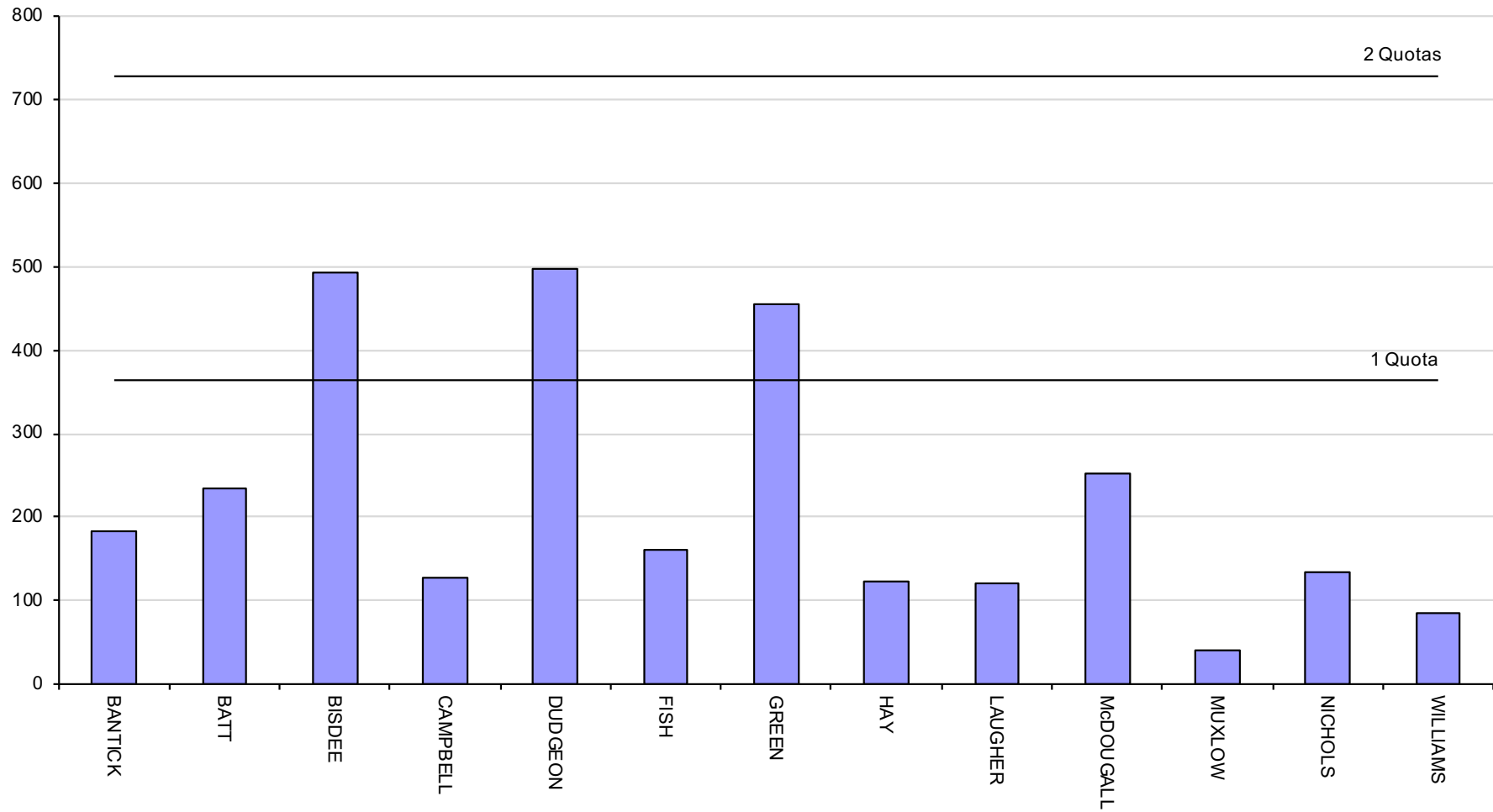
Informal ballot papers: 75

Informality rate: 2.52%

Quota = 364

MUXLOW	NICHOLS	WILLIAMS	Votes Exhausted	Loss (Gain) by Fraction	Total Votes	Remarks
41.00	135.00	86.00		0.00	2906.00	DUDGEON elected 1, BISDEE elected 2, GREEN elected 3
6.95	10.70	3.21		0.05		DUDGEON's surplus distributed
47.95	145.70	89.21		0.05	2906.00	
3.12	4.68	2.08		0.05		BISDEE's surplus distributed
51.07	150.38	91.29		0.10	2906.00	
2.80	4.20	2.00		0.00		GREEN's surplus distributed
53.87	154.58	93.29		0.10	2906.00	
- 53.87	7.33	0.52		0.02		MUXLOW excluded
0.00	161.91	93.81		0.12	2906.00	
	11.26	- 93.81		0.03		WILLIAMS excluded
	173.17	0.00		0.15	2906.00	
	8.78			0.01		CAMPBELL part excluded
	181.95			0.16	2906.00	McDOUGALL elected 4
	0.36			0.01		CAMPBELL excluded
	182.31			0.17	2906.00	
- 158.00			3.00	0.00		NICHOLS part excluded
24.31			3.00	0.17	2906.00	BATT elected 5
- 24.31			0.20	0.02		NICHOLS excluded
0.00			3.20	0.19	2906.00	
			0.15	0.02		BATT's surplus distributed
			3.35	0.21	2906.00	
			3.00	0.00		HAY part excluded
			6.35	0.21	2906.00	BANTICK elected 6
			0.80	(0.01)		HAY part excluded
			7.15	0.20	2906.00	FISH elected 7

2018 Southern Midlands Councillor election - first preferences



Southern Midlands Council

Polling closed at 10am 30 October 2018

Returning Officer: Ms Justin Meeker

Mayor

Declarations admitted: 2 995

Ballot paper adjustment: 11

Total ballot papers: 2 984

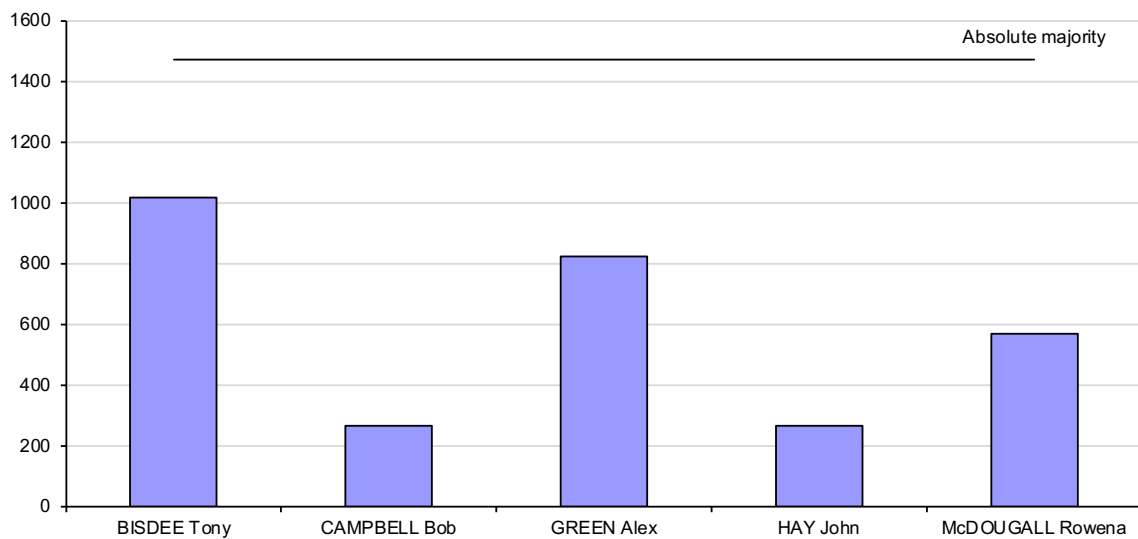
Formal Votes: 2 944

Informal ballot papers: 40

Informality rate: 1.34%

		BISDEE Tony	CAMPBELL Bob	GREEN Alex	HAY John	McDOUGALL Rowena	Exhausted	Total Votes	Absolute Majority	Remarks
Count 1	Progress Total	1017	265	823	269	570	0	2944	1473	First preferences
Count 2	Votes transferred	50	-265	48	58	85	24			CAMPBELL excluded
	Progress Total	1067	0	871	327	655	24	2944	1461	
Count 3	Votes transferred	57		123	-327	113	34			HAY excluded
	Progress Total	1124		994	0	768	58	2944	1444	
Count 4	Votes transferred	150		517		-768	101			McDOUGALL excluded
	Progress Total	1274		1511		0	159	2944	1393	GREEN elected

2018 Southern Midlands Mayor election - first preferences



Southern Midlands Council

Polling closed at 10am 30 October 2018

Returning Officer: Ms Justin Meeker

Deputy Mayor

Declarations admitted: 2 995

Formal Votes: 2 834

Ballot paper adjustment: 11

Informal ballot papers: 150

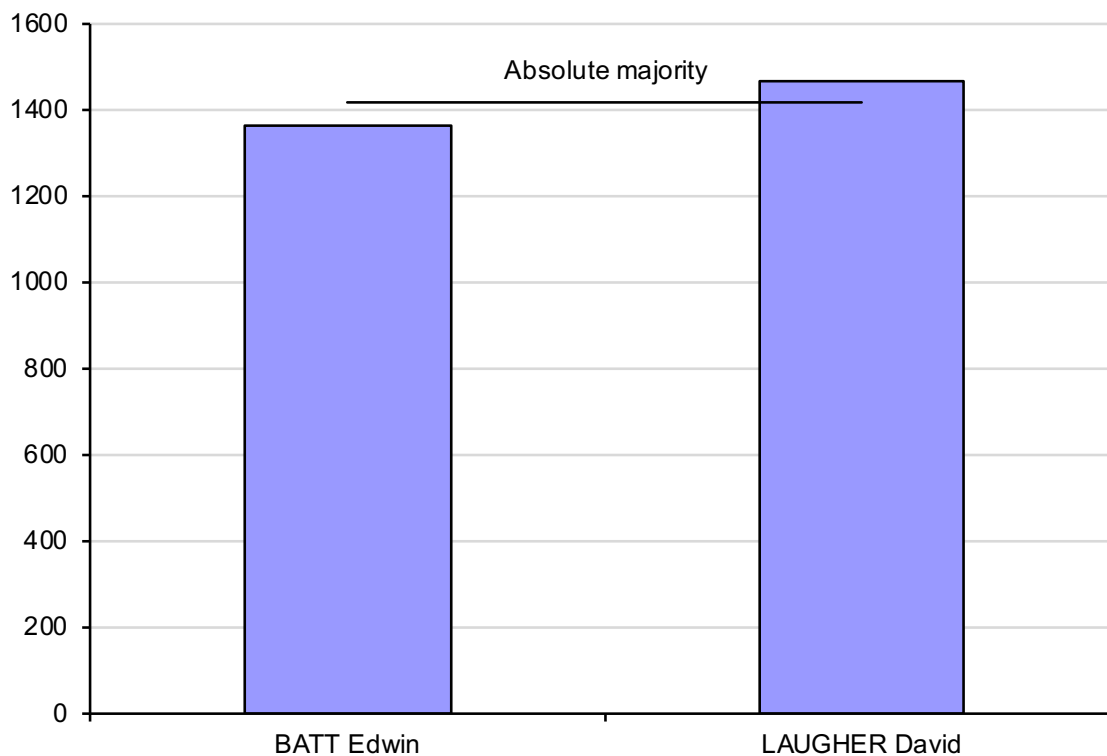
Total ballot papers: 2 984

Informality rate: 5.03%

		BATT Edwin	LAUGHER David	Total Votes	Absolute Majority	Remarks
Count 1	First preferences	1366	1468	2834	1418	LAUGHER elected*

* David Laugher was unable to accept this position as he was not elected as a councillor.

2018 Southern Midlands Deputy Mayor election - first preferences



Southern Midlands Council Councillor Recount

Recount due to death of Mark Jones

13 February 2015

		BAIN Jo	BARNES Richard	MARSHALL David	McDOUGALL Rowena	WILLIAMS Craig	Exhausted Votes	Lost by fraction	Total Votes	Absolute majority	Remarks
Count 1	Total	29.99	59.92	109.23	66.92	49.23	2.69	0.02	318.00	157.65	Distribution of JONES
Count 2	Votes transferred	- 29.99	5.15	6.61	8.53	9.69	0.00	0.01			BAIN excluded
	Progress total	0.00	65.07	115.84	75.45	58.92	2.69	0.03	318.00	157.65	
Count 3	Votes transferred		16.23	27.15	11.61	- 58.92	3.92	0.01			WILLIAMS excluded
	Progress total		81.30	142.99	87.06	0.00	6.61	0.04	318.00	155.68	
Count 4	Votes transferred		- 81.30	54.07	21.38		5.84	0.01			BARNES excluded
	Progress total		0.00	197.06	108.44		12.45	0.05	318.00	152.76	MARSHALL elected