

Submission to the Tasmanian Electoral Commission regarding the 2008 redistribution of the Legislative Council.

The Tasmanian Greens appreciate the opportunity to provide a response to the Initial Redistribution Proposal.

Overall we believe the proposal provides a sensible redistribution given the population change that has occurred in Tasmania over the last nine years. We regard the changes in the north of Tasmania, particularly the alignment of a number of boundaries with local government areas, to be an improvement in matching electorates with communities of interest.

In the south we believe the broad scope of the changes as also being sensible, with the transfer of voters from Huon to Nelson triggering a similar shift to Wellington and then to Elwick. Although this affects more voters than simply passing an area from Huon to Elwick it serves far better to unite each seat's community of interest.

However, in each of these transfers there was a choice to be made as to whether to transfer an area along the coast or further inland. In the case of the transfer of Maranoa Heights from Huon to Nelson the Greens would have preferred to see the transfer of Blackman's Bay to Nelson rather than what has been proposed. However, we accept that the lack of a strong boundary enclosing the right number of voters in Blackman's Bay, and the connection of Maranoa Heights to Kingston means that the proposal provides a better uniting of communities of interest than any alternative we can offer.

On the other hand, we believe that in the case of both the transfer between Nelson and Wellington, and between Wellington and Elwick a better alternative is on offer. In both cases it is possible to change to our proposal without creating any knock-on effects that would require changes to the proposed boundaries of other seats.

We recognise that both these proposals have probably already been considered by the Legislative Council Electoral Boundaries Redistribution Committee, but believe they warrant further attention.

Elwick/Wellington

Defining a "community of interest" is not easy, and has troubled many redistribution panels. However, local government boundaries usually serve very well as borders – even if they do not initially separate two distinct communities of interest they usually come to do so over time. Hobart and Glenorchy City Councils are very different demographically. Consequently, their border defines a strong community of interests, and it would be ideal to have the Elwick/Wellington boundary follow the same path. However, this would make Elwick too large, a problem that could not be rectified without undesirable changes elsewhere. The shift of a pocket of Hobart City Council voters into Wellington is desirable, but the key question is whether Lutana or Moonah should be passed to Elwick.

Neither option is really desirable. The two areas have strong transport and community links, and ideally should be held together. If the Elwick population declines as expected relative to the rest of the state it is likely that the next redistribution will unite them again in Elwick. In the meantime, however, the Tasmanian Greens believe it would be better to include Lutana as part of Elwick, keeping the section of Moonah currently in Wellington where it is.

While we concede the undesirable elements to this, the current proposal places Lutana with an electorate from which it is almost completely isolated. Lutana has multiple transport links with the



Draft
Final

The Greens
 Thu Mar 06 10:16 2008
 lutana&sth_hbt



© 2008, TAS Electoral Commission. All rights reserved.
 Land Information Data © The State of Western Australia (DLJ), (2006). License No. PA195-2006.
 Land Use Data © Commonwealth of Australia (National Land and Water Resources Audit) 2006.
 Forest Data © The Director General of the Department of Environment and Conservation.
 This map contains data compiled by the TAS Electoral Commission from a number of sources for the 2008 Electoral Distribution. Whilst all care has been taken in the compilation of this map no responsibility can be accepted as to either its accuracy or fitness for purpose and no liability will be accepted by the TAS Electoral Commission for any damages arising from decisions based upon this map.

STATISTICAL SUMMARY OF THE ELECTORAL REDISTRIBUTION**Scenario name: lutana&sth_hbt&sth_hbt****Print time: Thu Mar 06 10:16:31 2008**

Number of seats: 15
Current elector quota: 23,182
Projected elector quota: 24,084
Date of this distribution: Wednesday, November 21, 2007

No.	District	Current Electors	Difference from Quota	Projected Electors	Difference from Quota
1	Apsley	22,665	-2.2%	23,226	-3.6%
2	Derwent	21,715	-6.3%	23,615	-1.9%
3	Elwick	25,029	+8.0%	24,742	+2.7%
4	Huon	22,354	-3.6%	23,738	-1.4%
5	Mersey	22,918	-1.1%	23,390	-2.9%
6	Montgomery	23,581	+1.7%	24,360	+1.1%
7	Murchison	23,798	+2.7%	24,304	+0.9%
8	Nelson	22,675	-2.2%	23,908	-0.7%
9	Paterson	23,012	-0.7%	24,246	+0.7%
10	Pembroke	23,898	+3.1%	24,463	+1.6%
11	Rosevears	23,036	-0.6%	24,025	-0.2%
12	Rowallan	23,351	+0.7%	24,665	+2.4%
13	Rumney	22,831	-1.5%	24,352	+1.1%
14	Wellington	23,987	+3.5%	24,637	+2.3%
15	Windermere	22,892	-1.3%	23,595	-2.0%
Total			347,742		361,266

area to be transferred to Elwick, as well as the section of Derwent Park around Derwent Park Road. On the other hand, the link with Wellington is restricted to the flyover of Brooker Highway and Risdon Rd. There are no local roads connecting Lutana to Wellington without Moonah, nor walkways or bicycle paths. These two areas share little.

Technically, on the current proposal someone coming from the main area of Wellington has to leave the electorate, albeit by half the width of a road, in order to reach Lutana. A similar link exists from Lutana to the main body of Elwick, but there are much stronger links to the eastern extension of Derwent Park bordering on Prince of Wales Bay. Putting Lutana into Elwick would also remove the aberrational situation of the residents of this section Derwent Park who are currently largely cut off from the rest of the Elwick electorate.

Shifting Lutana into Elwick will leave the area bounded by Derwent Park Rd, Brooker Highway and Main Rd as a finger sticking into Elwick. Clearly this is undesirable. However, the area is much larger, and the boundaries much clearer, than the section of South Hobart now in Wellington. The area is sufficiently self-contained that it will not have the problem of people not even knowing where the boundary lies which bedevils South Hobart.

Wellington/Nelson

The Greens believe it would be much better to keep the community of Sandy Bay united in the electorate of Nelson, rather than moving part of it to Wellington. The Initial Redistribution Proposal uses the University of Tasmania as a boundary between the electorates. However, given the high concentration of students and academics in the area to the north of the university it would be better to consider it a feature binding Sandy Bay together and a reason to keep it united.

At the same time, we believe this is a perfect opportunity to bring the residents of South Hobart into Wellington. The current situation where people living north-east of the corner of Gore and Macquarie Street are in Nelson, but surrounded on three sides by Wellington, is certainly undesirable, and can now be fixed. The community of interest these people share with the rest of inner Hobart is far stronger than that shared between Sandy Bay and Hobart central.

The Greens have a strong interest in this area because so many of our members, and voters, live here. It is no coincidence that the voting patterns of the area are so similar to those of the nearby parts of Wellington. The inner south and west areas of Hobart have much in common, and belong in one seat, far more than each of them do with parts of Sandy Bay.

The Sandy Bay Rivulet forms a strong and memorable boundary for an electorate, clearing distinguishing the inner parts of Hobart from the suburbs to the south. At the moment this boundary is utilised for part of its way. The proposal will abandon this natural cartographic asset. We propose instead to utilise it fully, having it form the boundary between Wellington and Nelson for its entire length.

Such a boundary better suits the residents of both South Hobart and Sandy Bay than the current proposal, as each community is united rather than divided. The only disadvantage of this option is that the population along Marlyn Rd, Strickland Ave and Saunders Crescent is separated from that lower down. Since the natural transport route for these people is down Cascade or Huon Road this is a drawback.

On the other hand these areas share a strong similarity in terms of living conditions, outlook and demographics with fellow inhabitants of Mt Wellington's slopes, for example around Fern Tree. Consequently, their community of interest is at least as much with these parts of Nelson as with

their nearer neighbours down the slopes. As such the disadvantage for them of seeing South Hobart shifted to Wellington is relatively small compared to the benefits gained by the South Hobart residents who will no longer be carved out of an electorate to which they clearly naturally belong.

A slight variation on this proposal would see the area above the brewery included in Wellington. This would provide a near perfect match of boundaries with communities of interest. It would take Wellington further away from the quota, but it would still be closer on current figures than the proposed boundaries for Derwent and Elwick. More importantly, on the projections Wellington would still be closer to the quota in 2012 than Apsley.

Projected elector numbers under each proposal relative to quota for the electorates affected by our proposals.

	Initial proposal	Moonah to Wellington	South Hobart to Wellington	Moonah and Sth Hobart in Wellington	Moonah, Sth Hobart and area above brewery in Wellington
Elwick	2.2%	2.7%	2.2%	2.7%	2.7%
Nelson	0.1%	0.1%	-0.7%	-0.7%	-1.8%
Wellington	2.1%	1.5%	2.9%	2.3%	3.4%

Note: We have attached maps and population estimates provided with the assistance of Andrew Hawkey from the Tasmanian Electoral Commission.

Re: Submission to Mr. Bruce Taylor
Chairman
Legislative Council Electoral Boundaries Redistribution Committee



From: The Greens

Included: Maps relating to the submission being put forward in an email from Karen Cassidy

This envelope includes three sets of maps and statistics showing:

① Alternate 6 March

Map: "The Greens" Outlines proposed change to the Wellington/Nelson proposal

Map: "Serena Rule" Gives CCD numbers for this option

Statistics: Relate to effect of our proposed South Hobart alternative

② Alternate 6 March option 2

Map: Outlines proposed Moonah alternative to the Lutana proposal

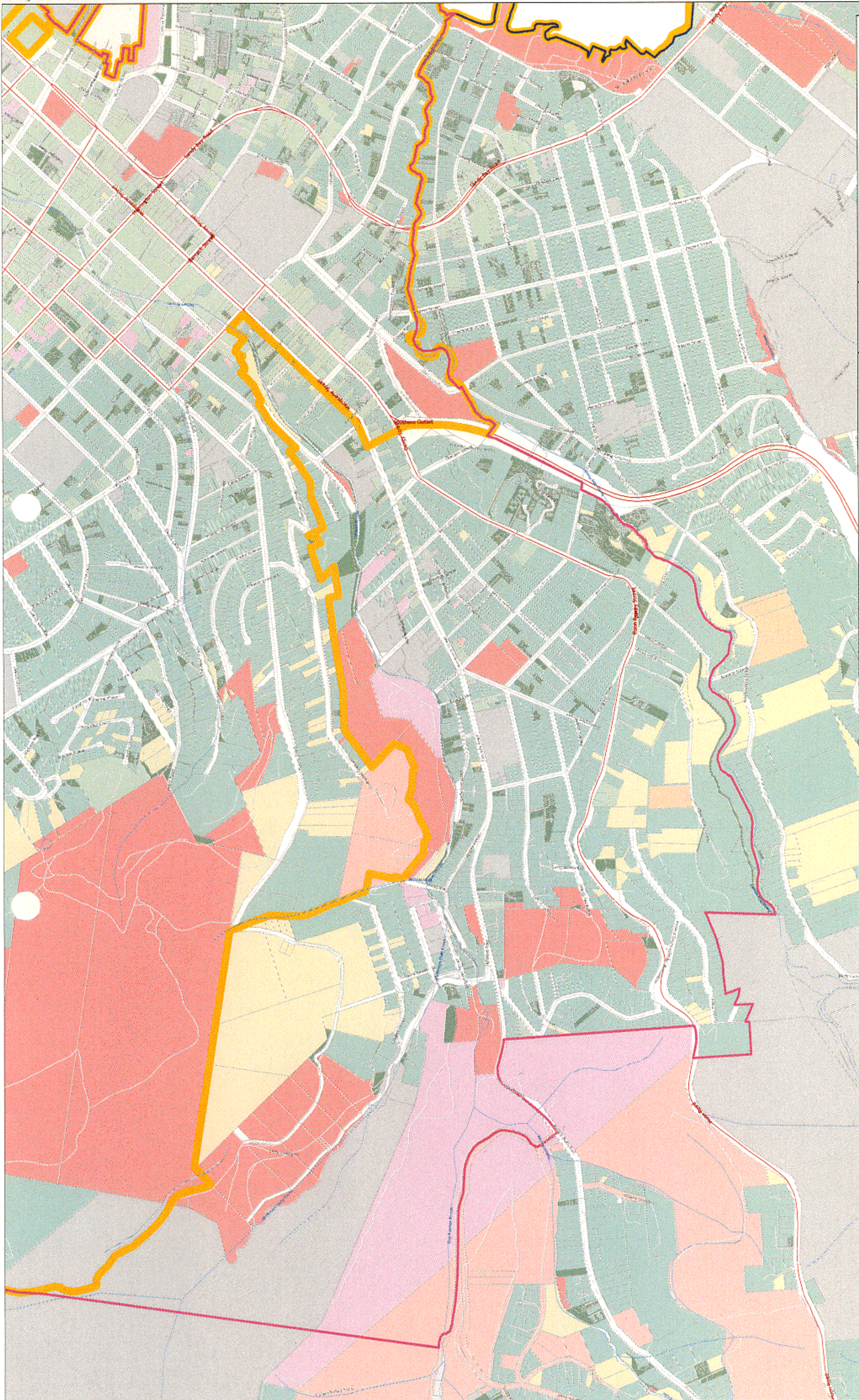
Statistics: Relate purely to effect of our proposal for Moonah

③ Lutana & sth_hbt

Map: As for Moonah option

Statistics: Relate to combined effect of our South Hobart and Moonah proposals.

If clarification is needed, contact Serena Rule: [REDACTED]



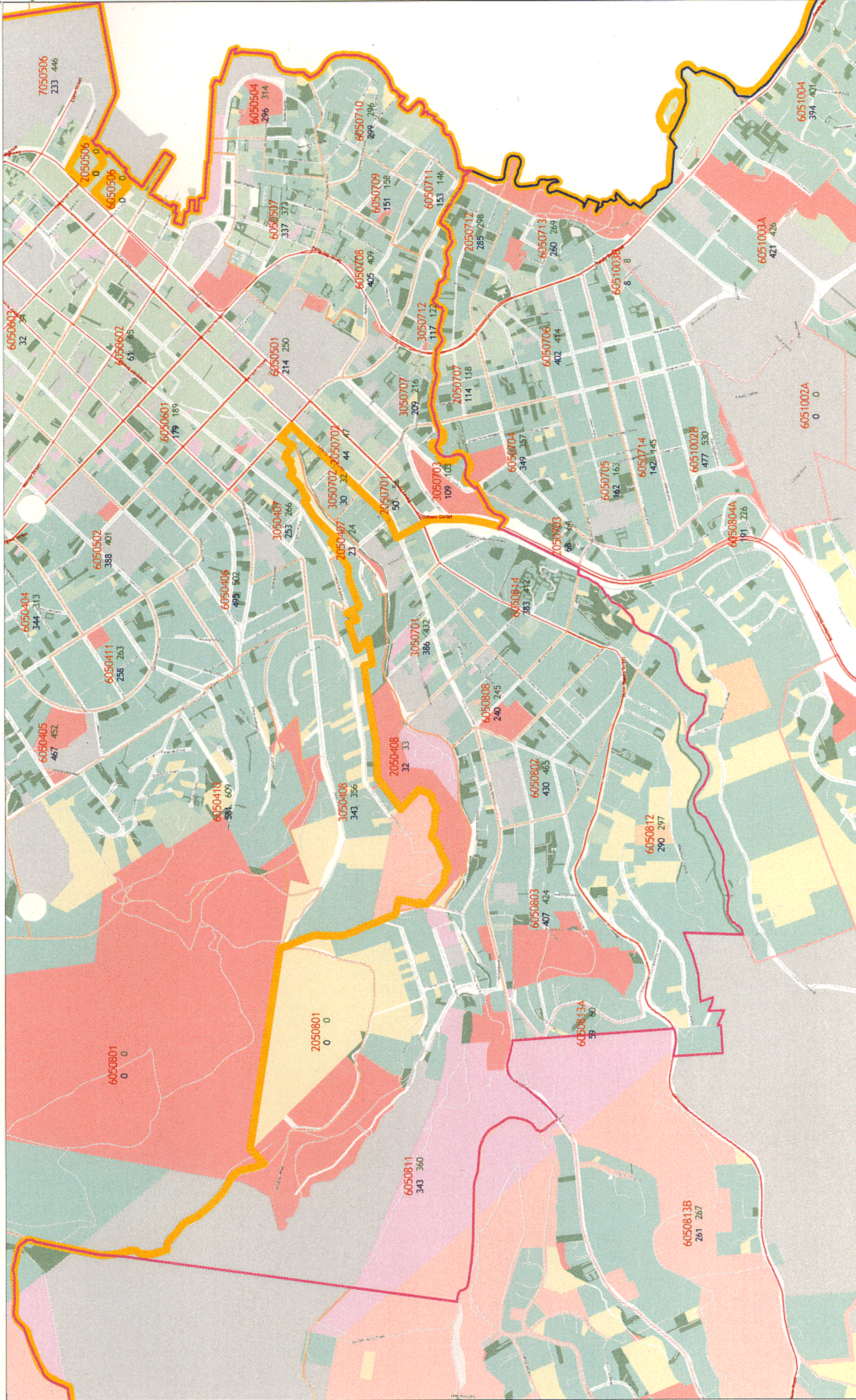
© 2008, TAS Electoral Commission. All rights reserved.
 Land Information Data © The State of Western Australia (DLI), (2006). License No. PA193-2005.
 Land Use Data © Commonwealth of Australia (National Land and Water Resources Audit) 2006.
 Forest Data © The Director General of the Department of Environment and Conservation.

This map contains data compiled by the TAS Electoral Commission from a number of sources for the 2008 Electoral Distribution. Whilst all care has been taken in the compilation of this map no responsibility can be accepted as to either its accuracy or fitness for purpose and no liability will be accepted by the TAS Electoral Commission for any damages arising from decisions based upon this map.

The Greens
 Thu Mar 06 09:43 2008
 Alternate_6_March

0 km 0.6

Draft
Final



Draft	Final
--------------	--------------

Serena Rule
 Thu Mar 06 09:39 2008
 Alternate_6_March
 0 km 0.6

© 2008, TAS Electoral Commission. All rights reserved.
 Land Information Data © The State of Western Australia (DLI), (2006). License No. PA183-2006.
 Land Use Data © Commonwealth of Australia (National Land and Water Resources Audit) 2006.
 Forest Data © The Director General of the Department of Environment and Conservation.
 This map contains data compiled by the TAS Electoral Commission from a number of sources for the 2008 Electoral Distribution. Whilst all care has been taken in the compilation of this map no responsibility can be accepted as to either its accuracy or fitness for purpose and no liability will be accepted by the TAS Electoral Commission for any damages arising from decisions based upon this map.

STATISTICAL SUMMARY OF THE ELECTORAL REDISTRIBUTION**Scenario name: Alternate_6_March_6_March***Print time: Thu Mar 06 09:36:26 2008*

Number of seats: 15
Current elector quota: 23,182
Projected elector quota: 24,084
Date of this distribution: Wednesday, November 21, 2007

No.	District	Current Electors	Difference from Quota	Projected Electors	Difference from Quota
1	Apsley	22,665	-2.2%	23,226	-3.6%
2	Derwent	21,715	-6.3%	23,615	-1.9%
3	Elwick	24,919	+7.5%	24,606	+2.2%
4	Huon	22,354	-3.6%	23,738	-1.4%
5	Mersey	22,918	-1.1%	23,390	-2.9%
6	Montgomery	23,581	+1.7%	24,360	+1.1%
7	Murchison	23,798	+2.7%	24,304	+0.9%
8	Nelson	22,675	-2.2%	23,908	-0.7%
9	Paterson	23,012	-0.7%	24,246	+0.7%
10	Pembroke	23,898	+3.1%	24,463	+1.6%
11	Rosevears	23,036	-0.6%	24,025	-0.2%
12	Rowallan	23,351	+0.7%	24,665	+2.4%
13	Rumney	22,831	-1.5%	24,352	+1.1%
14	Wellington	24,097	+3.9%	24,773	+2.9%
15	Windermere	22,892	-1.3%	23,595	-2.0%
Total			347,742		361,266



	Draft
<p>The Greens Thu Mar 06 10:19 2008 Alternate_6_mar_option2</p> <p>0 km 0.6</p>	Final
<p>© 2006, TAS Electoral Commission. All rights reserved. Land Information Data © The State of Western Australia (DLI), (2006). License No. PA195-2005. Land Use Data © Commonwealth of Australia (National Land and Water Resources Audit) 2006. Forest Data © The Director General of the Department of Environment and Conservation.</p> <p>This map contains data compiled by the TAS Electoral Commission from a number of sources for the 2008 Electoral Distribution. Whilst all care has been taken in the compilation of this map no responsibility can be accepted as to either its accuracy or fitness for purpose and no liability will be accepted by the TAS Electoral Commission for any damages arising from decisions based upon this map.</p>	

STATISTICAL SUMMARY OF THE ELECTORAL REDISTRIBUTION*Scenario name: Alternate_6_mar_option2_6_mar_option2**Print time: Thu Mar 06 10:19:23 2008*

Number of seats: 15
Current elector quota: 23,182
Projected elector quota: 24,084
Date of this distribution: Wednesday, November 21, 2007

No.	District	Current Electors	Difference from Quota	Projected Electors	Difference from Quota
1	Apsley	22,665	-2.2%	23,226	-3.6%
2	Derwent	21,715	-6.3%	23,615	-1.9%
3	Elwick	25,029	+8.0%	24,742	+2.7%
4	Huon	22,354	-3.6%	23,738	-1.4%
5	Mersey	22,918	-1.1%	23,390	-2.9%
6	Montgomery	23,581	+1.7%	24,360	+1.1%
7	Murchison	23,798	+2.7%	24,304	+0.9%
8	Nelson	22,840	-1.5%	24,100	+0.1%
9	Paterson	23,012	-0.7%	24,246	+0.7%
10	Pembroke	23,898	+3.1%	24,463	+1.6%
11	Rosevears	23,036	-0.6%	24,025	-0.2%
12	Rowallan	23,351	+0.7%	24,665	+2.4%
13	Rumney	22,831	-1.5%	24,352	+1.1%
14	Wellington	23,822	+2.8%	24,445	+1.5%
15	Windermere	22,892	-1.3%	23,595	-2.0%
Total			347,742		361,266